

TECHNICAL SPECIFICATIONS

Suggested combinations		Broilers		Turkeys			Ducks	
		Light	Heavy	Rearing (<6w)	Medium Males	(<12 kg) Females	Males	Females
Top support								
Support cone								
Adjuster ring	Short							
Grill	14-strut							
	10-strut							
	4-strut							
Pan	CL (76 mm)							
	L (65 mm)							
Collar								
Number of birds/pan		50-80	50-75	60-70	50-70		60-70	
Animal info								
Average age at removal (weeks)		6	8	6	17	14	10	13
Average weight at removal (kg)		2,2	3,5	2	13	7	2,5	4,5
Density (birds/m²)		16-20	10-16	8-10	2-3	4-5,5	10-13	
Max daily feed intake (g/bird)		170	220	160	460	320	180	250
General & technical info								
Pan	Material	polypropylene (nylon top support)						
	Diameter	330 mm						
	Average pan content	660 g (feed level at 4)						
Transport	Material tubes	galvanized steel						
	Outside diameter tube	44,5 mm						
	Feed amount (*)	600 g/meter tube						
	Power unit	0,37 kW - 1/2 HP - 3 phase 50 Hz - 350 RPM						
	Average transport cap.	450 kg/hour						
	Max length per fill point	150 m						
	Max. pellet diameter	4 mm						

(*) Based on a specific weight of 0,65 kg/dm³ !

MINIMAX™
is an exclusive Roxell®-product.

ROXELL® reserves the right to make modifications to
improve its products or systems, without prior notification.

Your ROXELL® Service Point:

00103333 - ©ROXELL® NV - 09/2002 - Leaflet MINIMAX™ - English

MINIMAXTMline

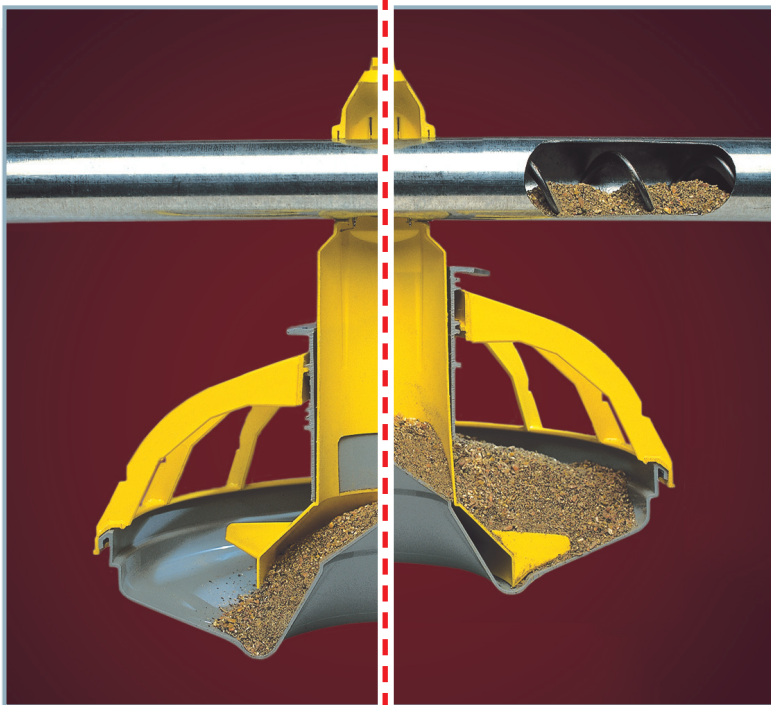


Modular line
of feeder pan components for poultry



ROXELL® NV Belgium - Industrielaan 13 - 9990 Maldegem,
Tel. +32 50 72 91 72 - Fax +32 50 71 67 21 - E-mail: roxell@roxell.com - www.roxell.com
ROXELL® Millenium House – 5th Floor, Ul. Trubnaya 12, 107045 Moscow, Russian Federation
Tel: +7 495 795 0657 - Fax: +7 495 795 0632 - Email: info.russia@roxell.com - www.roxell.ru
ROXELL® Malaysia - No. 12 Jalan Anggerik Mokara 31/48, Kota Kemuning Industrial Park,
40460 Shah Alam, Selangor, Malaysia - Tel: +603-5121 7150 - Fax: +603-5121 7146
Email: info@roxell.com.my - www.roxell.com.my





MINIMAXTM line

1

Fast growth from day one

- Feed windows fill the pans automatically and quickly with a high feed level.
- A low pan edge gives easy access to the feed.
- W-shaped pan design sinks deep in the litter.

2

Important feed savings

- Feed concentrated in the center of the pan far from the edge.
- Accurate setting of feed level, adjustable according to the kind of feed used.
- Wings on feed cone prevent the birds from scratching and spilling the feed.

MINIMAXTM line

3

Optimum hygiene, easy to clean

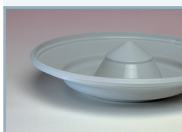
- Made of durable plastics, resisting all commonly used cleansing agents and detergents, the pans are easy to clean.
- Pans have only 5 or 6 parts, easy to disassemble for thorough cleaning.
- A 10-year-warranty (*) on the pans and augers.

(* Degressive warranty)

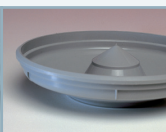
4

Modular, flexible and interchangeable

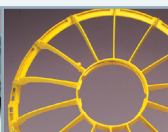
- Pan components for different types of poultry: broilers (all sizes), turkey poults or hens, ducks, guinea fowl, quails, ...



L-pan - height: 65 mm.
Large feed trough,
low feed level.



CI-pan - height: 76 mm.
Small feed trough,
intermediate feed level.



14 strut-grill:
lets birds line up
around the pan.



10 strut-grill:
large grill spacing for
large birds.



4 strut-grill pan support:
open eating
environment.



Feed saver collar.
Clip-on collar for turkey pan
with 4 strut-grill.



Short feed level ring.
7 level settings.



Top support made of nylon.
Strong connection to
feeder tubes.



Feed cone with
feed windows
and wings.