



SKOV Air Intake

Optimal Climate

Low Maintenance

Better Animal Welfare

The importance of fresh air supply

A healthy livestock house climate depends on many factors, but one of the primary ones is the supply of fresh air. There are several things to consider in connection with supplying air to the house, including the type of house, production type, and climatic conditions. SKOV offers various air inlets, meaning that no matter where and how your livestock house is located, we have an air inlet suited to your needs.

SKOV Air Intake

Optimal Climate

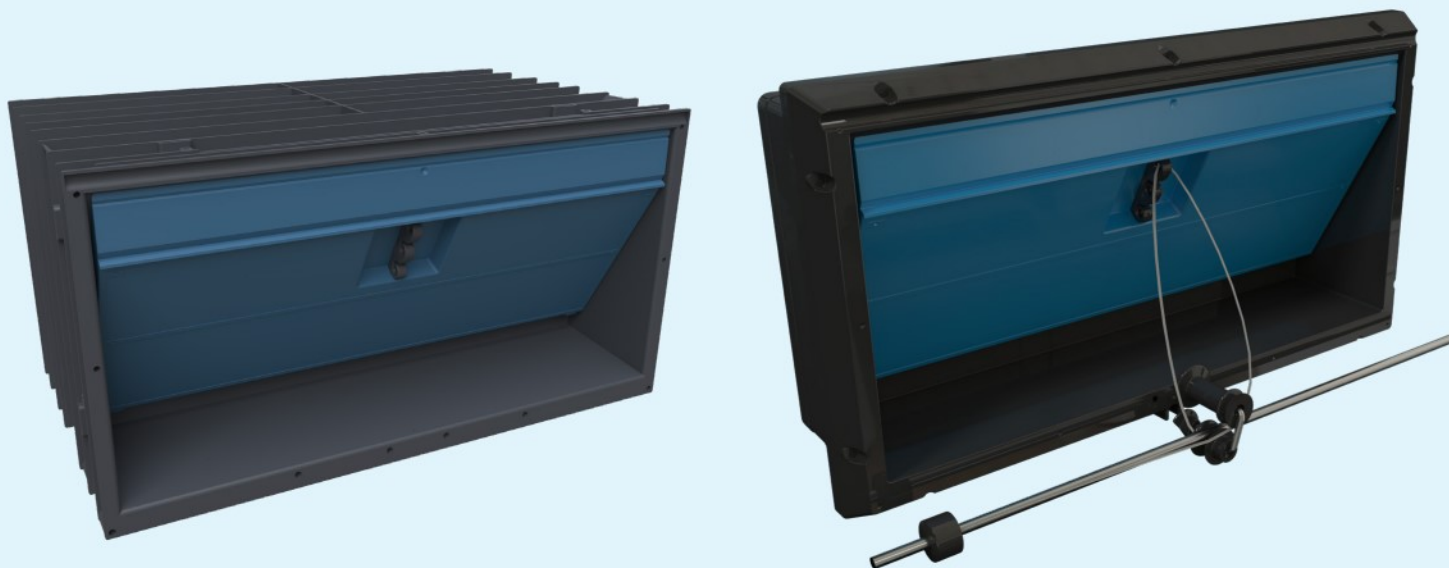
Low Maintenance

Better animal welfare

DA 1200/DA 1211 Wall inlet	4
DA 1911 Wall inlet	5
DA 3800 Wall inlet	6
DA 65-600 Chill unit	7
DA 1540/DA 1540 chill Ceiling inlet	8
DA 1800 Ceiling inlet	9
DA 60-820 Roof inlet	10
DA 17K/DA 10K Tunnel inlets	11
Rack & pinion system	12
Tunnel door light	12
DA 175 actuator and interlinking system	13

DA 1200/1211

Wall inlets



Broiler house with DA 1211 inlets



Rearing house with black-out light traps

DA 1200 bricked-in wall inlets provide fresh air to the house. The bricked-in wall inlet is suitable for concrete and brick houses and available for a variety of wall thicknesses. The inlets require no additional support in connection with bricking in or fixing inlets in walls.

DA 1211/1911 flange inlets provide fresh air to the house. The flange inlet is well suited for light wall constructions or concrete buildings as you can mount the inlet on an interior wall with screws through the flange.

- Advanced Inlet Control – creating more powerful air currents at minimum ventilation
- Optimum and accurate closing functionality under all climatic conditions
- Fully insulated, DA 1211 anti-freeze variant
- Maintenance-free, long durability
- Robust – stands high-pressure cleaning

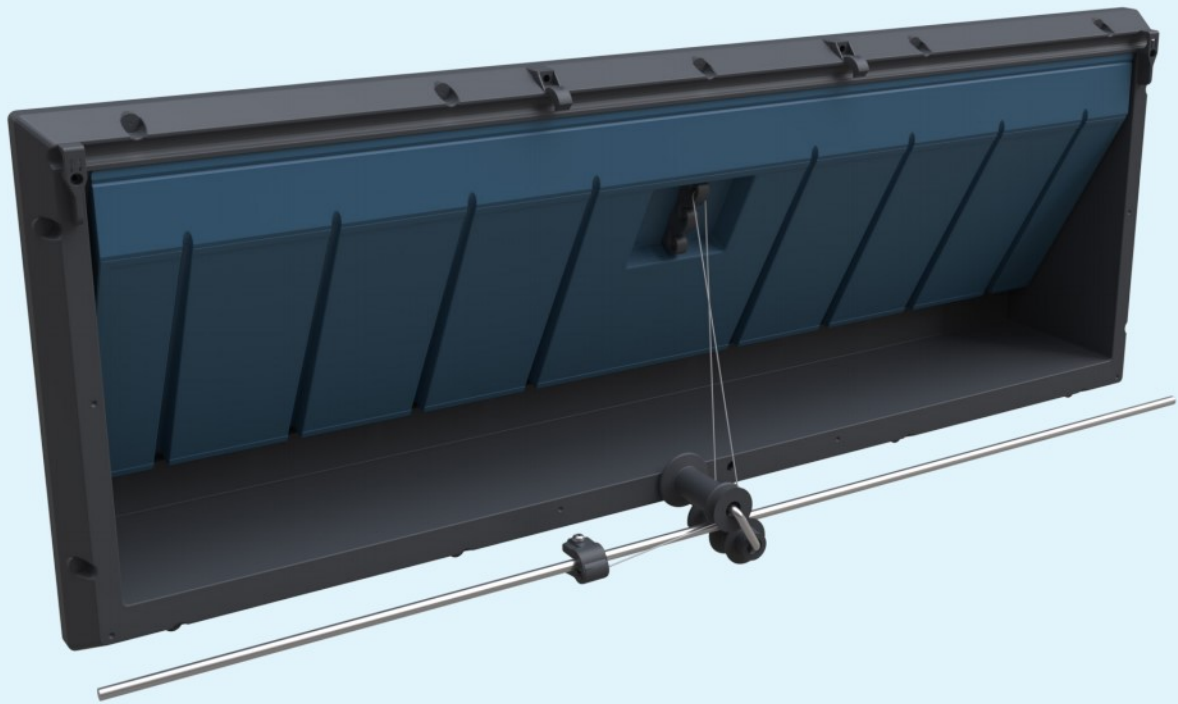


DA 1200 inlets with inlet cover and fly screen

- Operated by a pull rod – ensures longtime uniform operation of all inlets
- Accessories: air direction baffle, inlet cover, light trap, fly screen.

DA 1911

Wall inlets



DA 1911 inlet with short air direction baffle



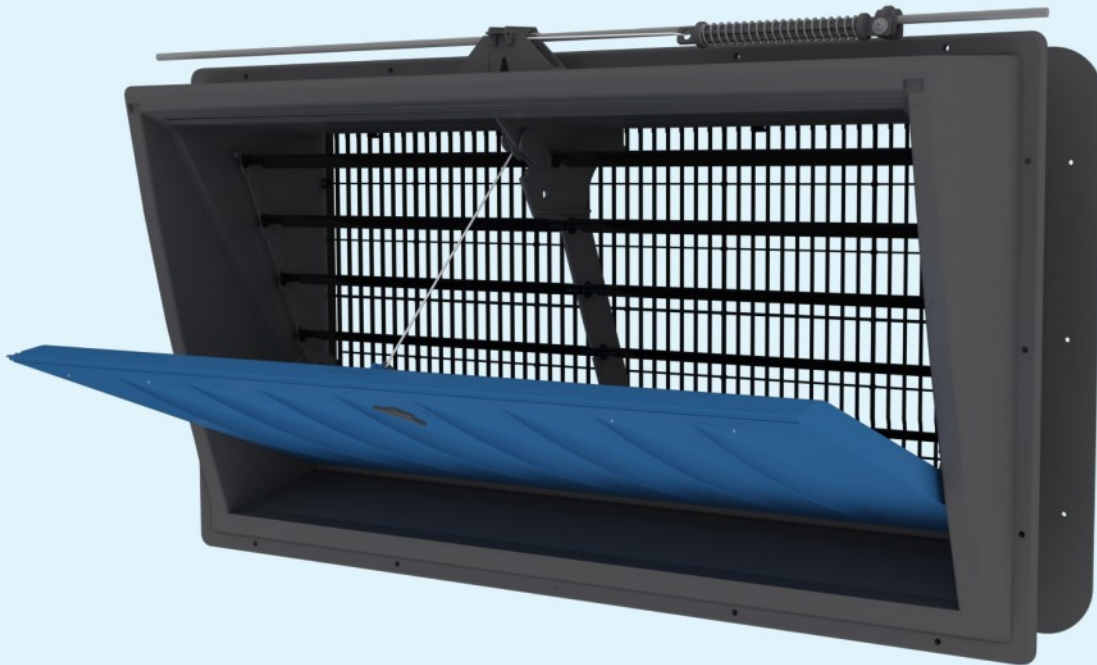
DA 1911 inlet with long air direction baffle



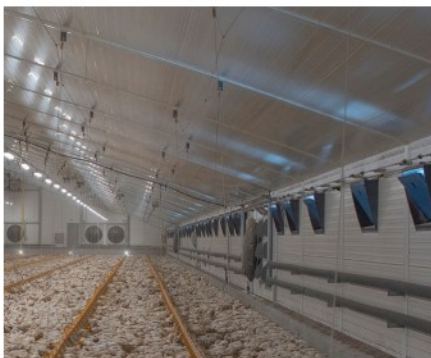
DA 1911 inlet with transparent flap for light access

DA 3800

Wall inlets



Broiler house with DA 3800 and outside weather screen



Same broiler house inside showing the AIC opening system

DA 3800 is a high-capacity wall inlet that combines correct minimum ventilation with high performance and good chill effect during hot periods.

- High-capacity inlet – price-optimized inlet system
- (AFC) Advanced Flow Control maintains excellent pressure stability at all ventilation levels.
- (AIC) Advanced Inlet Control – creating more powerful air currents at minimum ventilation
- Maintenance-free – long durability
- Robust – stands high-pressure cleaning
- Operated by a pull rod – ensures longtime uniform operation of all inlets

DA 65-600

Chill unit



DA 65-600 recirculation unit provides an optimum air velocity and air distribution in the livestock house. The fan creates a pleasant house climate and contributes to healthy and productive animals. Using the recirculation fans, heat stress can be prevented and productivity maintained.

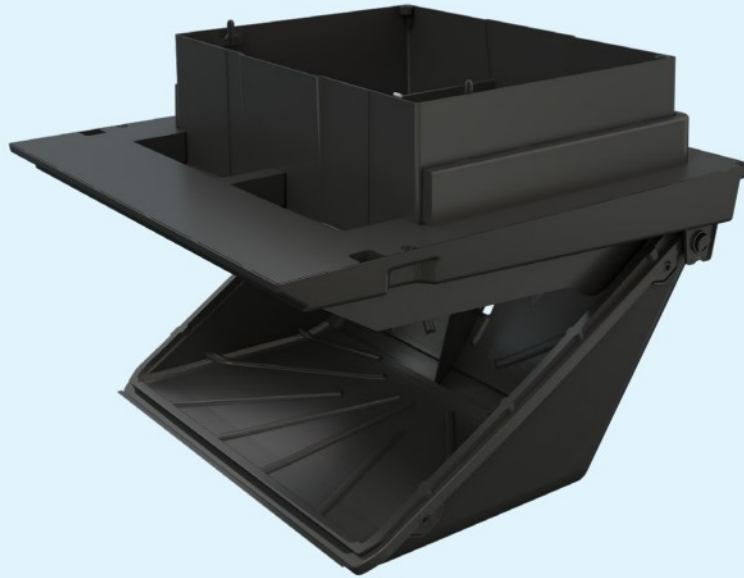
- Optimized design for maximum air flow
- High throw – fewer units to blow over long distance.
- High-quality, durable materials and stands high-pressure cleaning.
- Manually or power-driven elevation to facilitate the cleaning of the house.
- The built-in fan is steplessly controlled.



DA 65-600 chill units working together with DA 1911 inlets to ensure a pleasant floor level climate.

DA 1540

Ceiling inlets / Chill ceiling inlet



DA 1540 ceiling inlets opened for traditional side mode ventilation. The air adheres to the ceiling before returning in the zone occupied by the animals



The DA 1540 chill inlet creates a vertical air flow to chill the pigs in the lying area

The DA 1540 ceiling inlet is an efficient, compact inlet for attic constructions that will direct fresh air into the livestock house through the attic space. The ceiling inlet design ensures optimum regulation of air volume, air velocity, and air direction relative to the temperature and layout of the house.

The ceiling inlet is made from dirt-repellent, easily cleanable materials that will withstand high-pressure cleaning. The inlet casing and flap are insulated to prevent condensation.

- Advanced Inlet Control – creating more powerful air currents at minimum ventilation
- Robust - stands high-pressure cleaning
- Operated by a pull rod – ensures longtime uniform operation of all inlets
- At fully open, the air is directed almost straight down to create a chill effect

- Insulated inlet casing and shutter counteract condensation
- Prepared for mounting of high-pressure cooling

DA 1540 chill ceiling inlet

DA 1540 chill inlet is a variant, which can open more and direct the air vertically down into the pigs' lying area and cool them.

DA 1800

Ceiling inlet



The DA 1800 ceiling inlet is an efficient, compact, supplementary inlet that will direct fresh air into the livestock house during hot periods. The inlet is most often used in connection with Combi-Diffuse ventilation.

- Suited for pig houses
- Used in livestock houses with Combi-Diffuse ventilation
- Efficient, extra air inlet for very hot periods
- Smooth and dirt-repellent surface
- Stands heavy high-pressure cleaning
- Low initial costs



Combi-Diffuse ventilated house with DA 1800 ceiling inlet

DA 60-820

Roof inlet



Breeder house with DA 60-820 roof inlet and DA 820 chimney outlet

DA 60-820 is an air intake that combines high output with low air velocity in the animal zone. The unit can be used in a negative pressure system without the fan. When installing a fan, an equal pressure system unit is achieved. The DA 60-820 is equipped with a recirculation fan that ensures the required air-jet range, even though the amount of inbound air is reduced.

- Negative pressure or equal pressure ventilation
- Uniform air distribution at 100% stepless regulation
- Can be mounted in most types of houses
- Suitable for free-range
- Retrofitting, for leaky/old buildings
- Less sensitive to outside wind conditions



The DA 60-820 attic version gets the air from the attic area

DA 17K/ DA 10K

Tunnel inlet



DA 17K as tunnel doors in a Combi-Tunnel broiler house

The DA 17K/ DA 10K tunnel inlet serves as an air inlet in houses with Tunnel or Combi-Tunnel ventilation.

The DA 17K/ DA 10K tunnel inlet can be mounted directly in interior walls or sandwich panels and is equipped with semi-insulated inlet flaps made from PVC (polyvinylchloride).

- Uniquely suited for layer cage houses with less wall space clearance
- Easy to fit in when reduced space
- Air direction control
- Available with semi-insulated, highly-insulated and transparent flap
- Airtight when closed
- Can be used with emergency opening
- Reduced building and fitting costs
- Robust and easy to clean



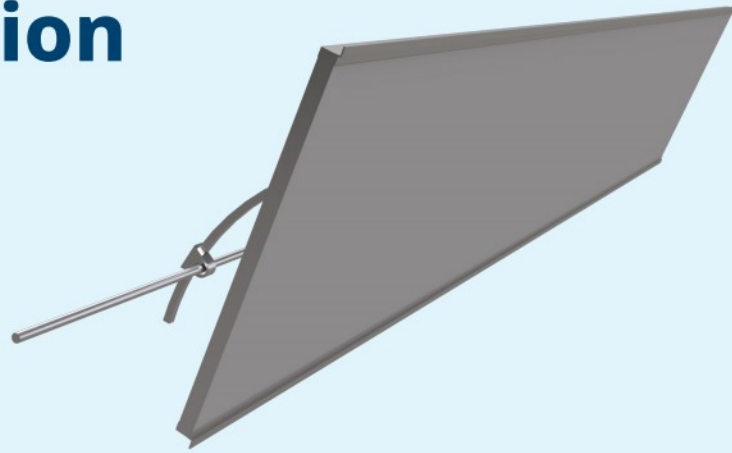
The DA 10K is the smaller version



The DA 10K with transparent flaps when outdoor light is required

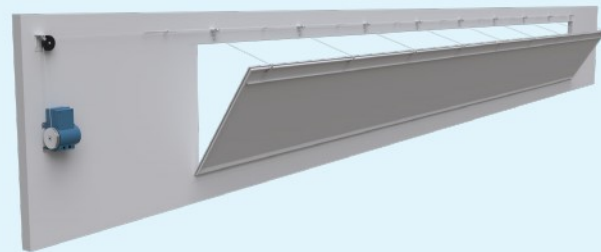
Rack and Pinion

Tunnel inlet



Tunnel door light

Tunnel inlet



Rack & Pinion as the tunnel door solution in a tunnel ventilated house



Tunnel Door Light closing system for houses with Tunnel or Combi-Tunnel.

Rack and Pinion is a closing system for tunnel openings in houses with Tunnel or Combi-Tunnel.

- Flexible door size solution
- Robust, insulated, and airtight, no entry of false air
- Guide the air into the house, uniform climate.

Tunnel Door Light is a closing system for tunnel openings in houses with Tunnel or Combi-Tunnel.

- Competitive solution
 - Lightweight sol
- SKOV supplies the critical components – the local vendor supplies infill doors

A SKOV tunnel door system is offered for tunnel openings. This system is a complete solution for making a properly sealed door into the house. The system is designed with door panels and a height is up to 1.2 m.

The tunnel door system is usually located inside the livestock house by the cooling section (dog house), if any, and opens inward to an angle of approx 60°. The inbound air will be distributed upward with a relatively high air velocity at maximum ventilation, and the return air will ventilate the area below the door.

DA 175 actuator

interlinking system



The DA 175 in a setup with DA 1211 wall inlets



The DA 175 with the DA 3800 wall inlet in a simple setup

A well-functioning system requires components that are connected correctly.

In each house section, the air intake and the exhaust units are individually adjusted via actuators explicitly designed for the purpose.

The mounting kits ensure the right connection between the air intake, exhaust units, and actuators.

- DA 175 actuator for precise regulation of wall and ceiling inlets
- It is installed with a direct pull of the inlets, which ensures a reliable and straightforward installation
- Manual operation is possible
- It is designed for aggressive environments and can be washed off
- Easy to install
- Maintenance-free DC motor





SKOV A/S

Hedelund 4 • DK-7870 Roslev
T: (+45) 7217 5555

SKOV Asia Ltd.
PB Tower • TH-10110 Bangkok
T: (+66) 2 382 3031-2

SKOV North America, Inc
160 Clairemont Avenue, Suite 200 • Decatur, GA 30030 • USA
T: +1 (678) 954 5743

SKOV Russia LLC
Derzhavinskaya st. 16A, office 304 • 392000 Tambov • Russia
T: +7 (4752) 49 25 39

SKOV Technical Services (Tianjin) Co., Ltd.
斯科弗技术服务(天津)有限公司
天津市武清开发区
T: 电话: (+86)-131-6178-4389

E: info@skov.com