

BEST FANS IN THE WORLD.

IF YOU ASK US!

BlueFan BF 50 and BF 55

High performance

Energy-efficient

Intelligent design

Long durability



HIGH AIR OUTPUT

NOT AFFECTED BY STRONG WIND

STEPLESS AND ON/OFF VARIANTS



HIGH PERFORMANCE

BlueFan combines a minimum energy consumption with a high airflow ratio. The pressure-stable design enables the fans to run efficiently and always ensures optimum climate conditions in the livestock house. BlueFans are available in variants that can run anywhere between 0-100% capacity. It provides optimal and correct airflow at all times, rather than using cycle time (where the relay is shifting on and off).

High performance

Intelligent design

EMERGENCY OPENING

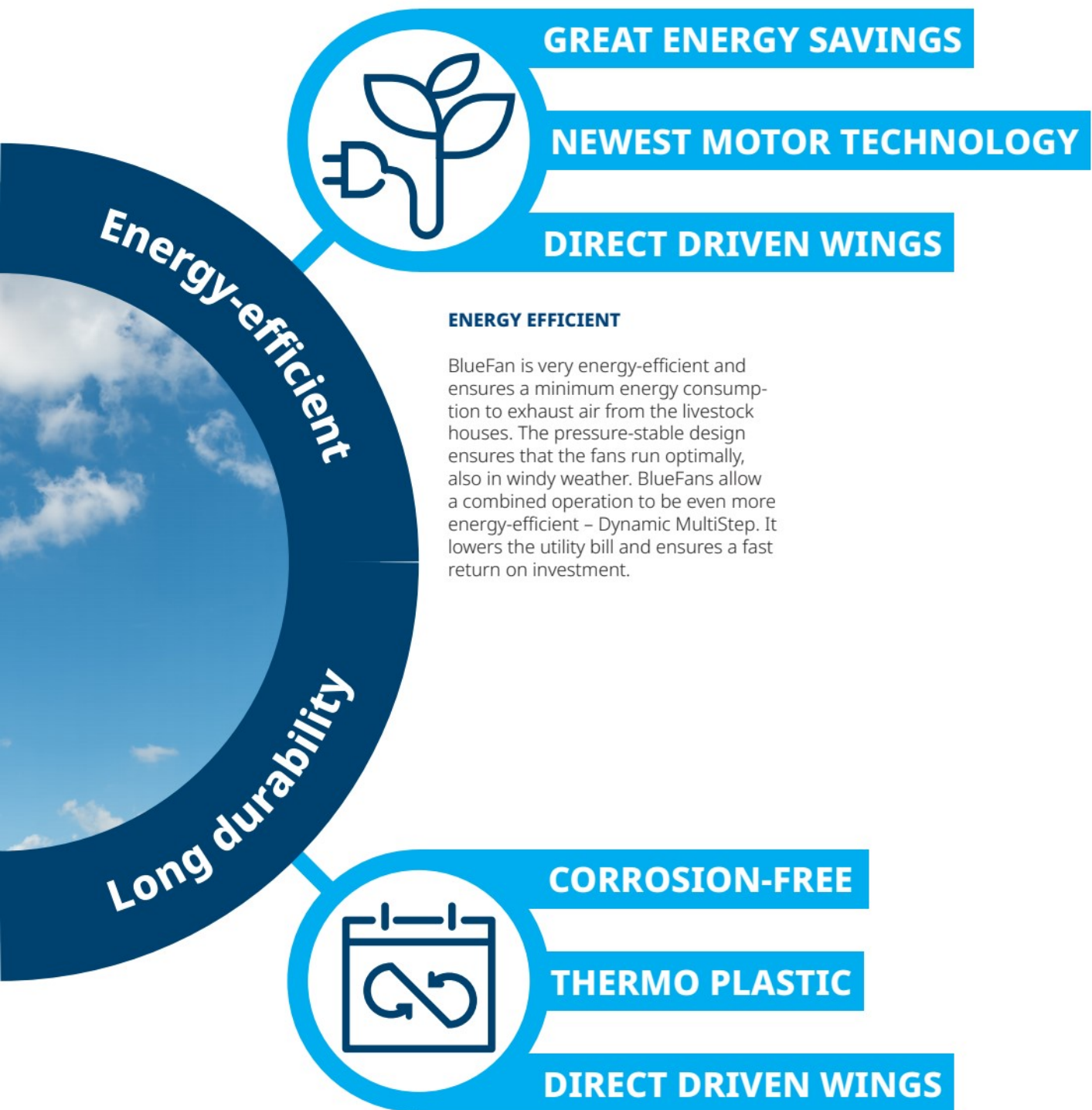
AIRTIGHT SHUTTER

HIGHLY INSULATED



INTELLIGENT DESIGN

The BlueFan has a motorized shutter that always remains in its correct position to ensure the right airflow. Furthermore, the shutter system can open automatically in the case of power failures. The airtight shutters have a high degree of insulation, which prevents drafts and minimizes condensation when the fan is not in operation.



ENERGY EFFICIENT

BlueFan is very energy-efficient and ensures a minimum energy consumption to exhaust air from the livestock houses. The pressure-stable design ensures that the fans run optimally, also in windy weather. BlueFans allow a combined operation to be even more energy-efficient – Dynamic MultiStep. It lowers the utility bill and ensures a fast return on investment.

LONG DURABILITY

BlueFan is made of thermoplastics and stainless steel, so it withstands the harsh environment in a livestock house. The fan has directly driven wings, so no adjustment and maintenance of belts are needed. The motor and controller are separated, which makes service and replacement less expensive.

SKOV Bluefan

BF 50



Replacing traditional box fans



The BF 50 fan can replace traditional box fans as a one-to-one solution. It is a 50-inch box fan and thus fits into the existing holes upon replacement. Likewise, you can often reuse the existing electrical installation and controller.

Traditional box fans, made of galvanized metal, require replacements at regular intervals as they are exposed to the harsh environment of the livestock house. In contrast, the BF 50 is made of thermoplastic and stainless steel – non-corrosive materials that, by far, better withstand the harsh environment in a modern livestock house.

The BF 50 with air-controlled shutters provides more insulation than traditional box fans. The shutter is more airtight, and the box is better insulated. You can choose the BF 50 with motor-controlled shutters for optimized climate and animal welfare.

Benefits:

- 50-inch box fan
- For renovations and new build
- High performance at low power consumption
- Plastic and stainless steel - no rust and corrosion
- Air- or motor-controlled shutter
- Pressure-stable – no problem in windy areas
- Airtight shutter and well-insulated – no draught or false air intake

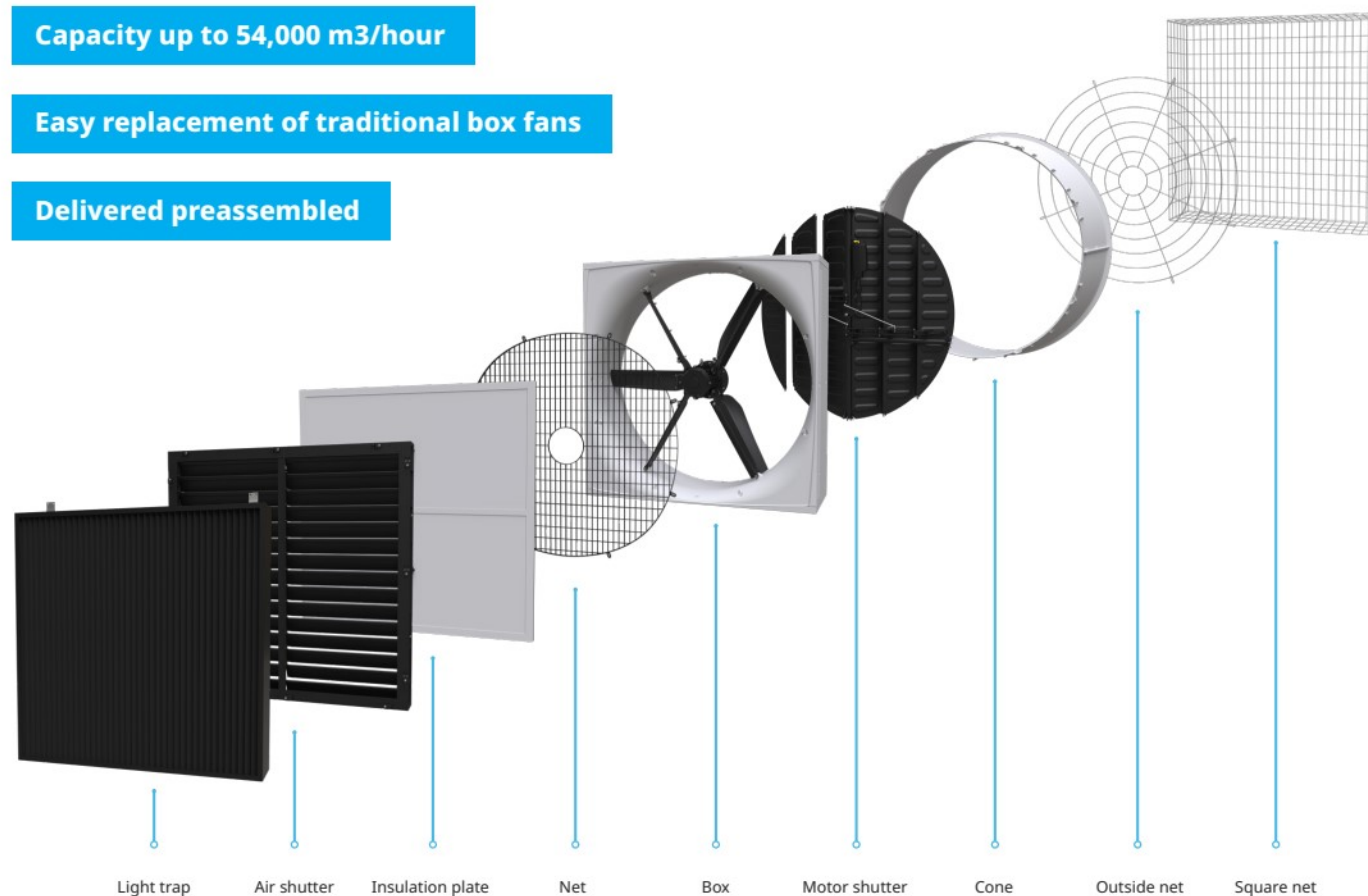
SKOV Bluefan

BF 50

Capacity up to 54,000 m³/hour

Easy replacement of traditional box fans

Delivered preassembled



		Data @ 10 Pa / 0,05" H2O				Data @ 40 Pa/0,15" H2O				Max pressure	BESS Lab test		
		All data w. cone		Air flow		Specific energy		Air flow				Specific energy	
		Product name	m3/h @ 10 Pa	CFM @ 0,05 " h2O	W/1000 m3/h @ 10 Pa	CFM/W @ 0,05 " h2O	m3/h @ 40 Pa	CFM @ 0,15 " h2O	W/1000 m3/h @ 40 Pa			CFM/W @ 0,15 " h2O	Pa
LPC ON/OFF	BF 50 LPC -3 ON/OFF LE 230V1 50/60 Hz	46700	27300	30	20	39700	23900	37	16	80	21145/21145b		
	BF 50 LPC -3 ON/OFF LE 230V3 50/60 Hz	47100	37300	30	20	39900	23800	37	16	80	21146/21146b		
	BF 50 LPC -3 ON/OFF LE 400V3 50/60 Hz	46300	27100	29	20	39300	23600	36	17	80	21152/21150		
	BF 50 LPC -3 ON/OFF HF 400V3 50/60 Hz	51900	30300	35	17	45400	27200	42	14	100	21151/21149		
LPC VAR	BF 50 LPC -3 VAR LE 230V1 50/60 Hz	46700	27300	30	20	39700	23900	37	16	80	21145/21145b		
	BF 50 LPC -3 VAR LE 230V3 50/60 Hz	47100	37300	30	20	39900	23800	37	16	80	21146/21146b		
	BF 50 LPC -3 VAR LE 400V3 50/60 Hz	46300	27100	29	20	39300	23600	36	17	80	21152/21150		
	BF 50 LPC -3 VAR HF 400V3 50/60 Hz	51900	30300	35	17	45400	27200	42	14	100	21151/21149		
ON/OFF EL	BF 50 ON/OFF EL 230V1 50 Hz	43400	25200	33	18	35800	21400	42	14	80	21138		
	BF 50 ON/OFF EL 230V1 60 Hz	41100	22500	34	16	35400	19900	42	13	100	21139		
	BF 50 ON/OFF EL 400V3 50 Hz	46400	26800	32	18	38000	23000	40	15	80	21136		
	BF 50 ON/OFF EL 230V3 60 Hz	39800	22900	34	17	32600	19600	44	14	90	21137		
	BF 50 ON/OFF EL 200V3 60 Hz	39500	23200	35	17	32700	19300	44	13	90	-		
ON/OFF AIR	BF 50 ON/OFF AIR 230V1 50 Hz	42600	24800	32	18	36300	21700	40	15	80	21140		
	BF 50 ON/OFF AIR 230V1 60 Hz	39100	22700	34	17	33800	20200	41	15	100	21141		
	BF 50 ON/OFF AIR 400V3 50 Hz	46200	27000	33	18	39000	23600	40	15	80	21143		
	BF 50 ON/OFF AIR 400V3 60 Hz	44000	25500	33	17	37900	22600	41	15	100	21142		
	BF 50 ON/OFF AIR 230V3 60 Hz	44200	25700	33	17	37900	22800	40	15	90	21144		
	BF 50 ON/OFF AIR 200V3 60 Hz	39000	22700	37	16	32800	19700	45	13	90	-		





SKOV Bluefan

BF 55



High-performance wall fan suitable for all types of houses

The BF 55 wall fan is a high-performance fan ideal for all kinds of houses requiring high air volume combined with high pressure stability.

In hot areas, where tunnel ventilation is applied, the BF 55 ensures that you can build an extra-long livestock house – an example could be egg production in cage systems. Regarding investment, long livestock houses are often preferred in a case like this.

The fan consists of thermoplastics and stainless steel, which withstands the harsh environment in a livestock house. The fan has a direct drive, meaning that the wings are directly driven, and no adjustment and maintenance of belts are needed.

The motor-controlled shutters ensure optimum climate and welfare in the livestock house.

The tightly closing shutter saves heating costs and ensures the same climate with a uniform distribution of animals all over the house.

Benefits:

- 55-inch flange fan
- Higher output - fewer fans needed
- Pressure-stable – no problem in windy areas
- Plastic and stainless steel - no rust and corrosion
- Airtight shutter and well-insulated – no draught or false air intake
- Maximum performance at low power consumption

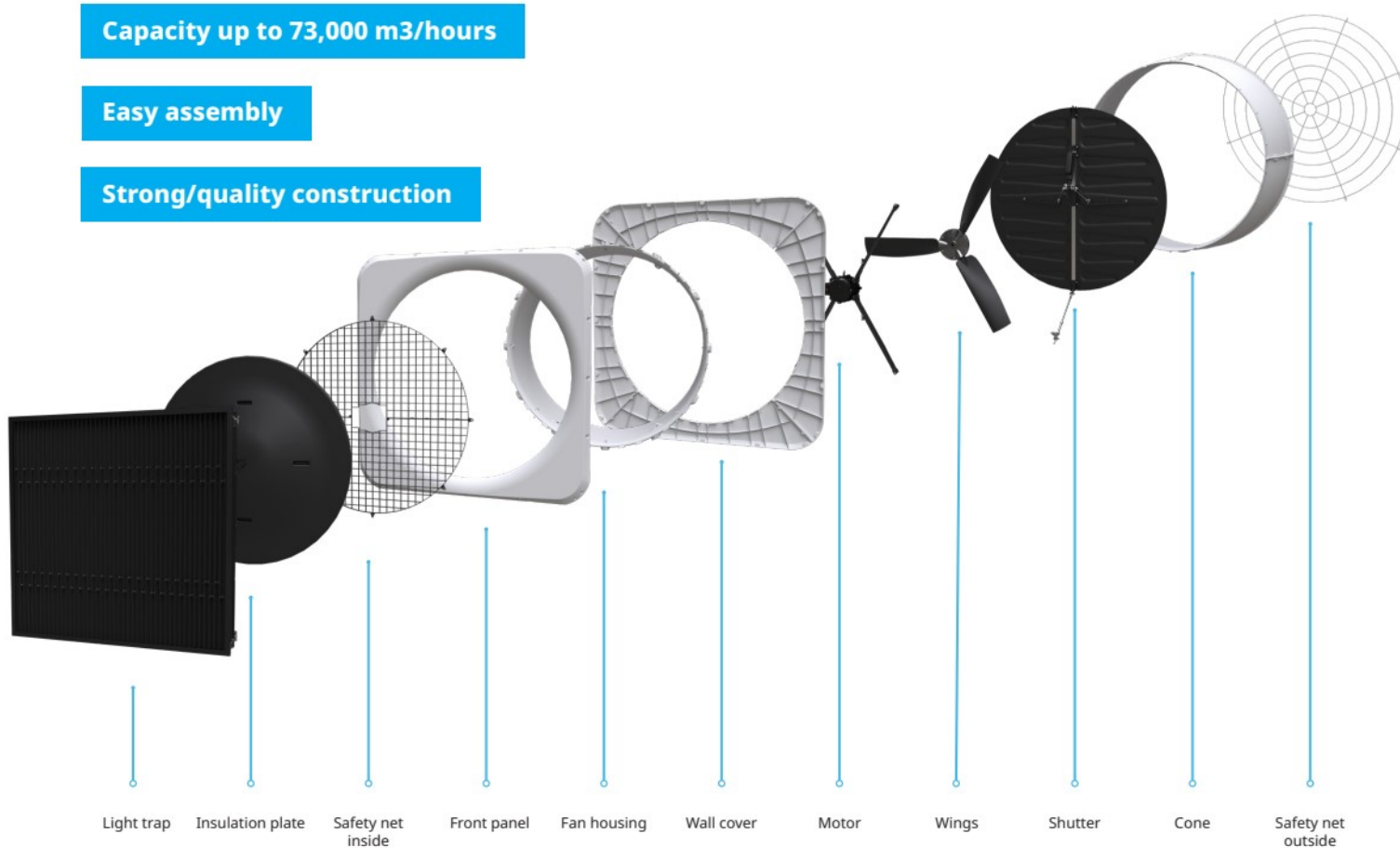
SKOV Bluefan

BF 55

Capacity up to 73,000 m³/hours

Easy assembly

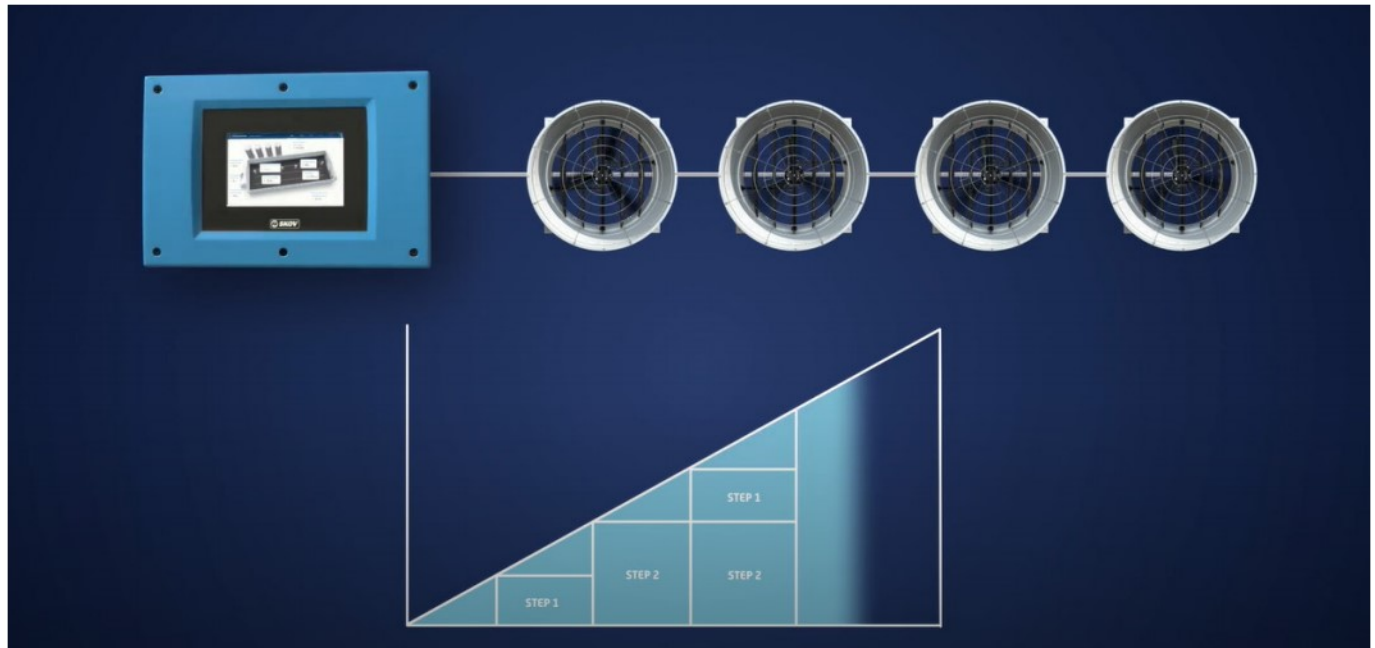
Strong/quality construction



		Data @ 10 Pa / 0,05" H2O				Data @ 40 Pa/0,15" H2O					
		Air flow		Specific energy		Air flow		Specific energy			
		Product name	m3/h @ 10 Pa	CFM @ 0,05 " h2O	W/1000 m3/h @ 10 Pa	CFM/W @ 0,05 " h2O	m3/h @ 40 Pa	CFM @ 0,15 " h2O	W/1000 m3/h @ 40 Pa	CFM/W @ 0,15 " h2O	Max pressure Pa
LPC	BF 55 LPC-3 LE 230V1 50/60 Hz	50300	29200	22	26	41300	24800	31	20	80	22677/22678
	BF 55 LPC-3 AIR LE 230V1 50/60 Hz (Dairy)	47000	27400	26	22	38600	23400	35	18	80	
	BF 55 LPC-3 HF 400V3 50/60 Hz	62200	36300	30	19	55600	33100	38	16	100	22679/22680
	BF 55 LPC-3 HF 230V3 50/60 Hz	61900	36100	31	19	55100	32800	38	16	100	22681/22682
	BF 55 LPC-3 HF+ 400V3 50/60 Hz	71600	41900	37	16	65500	38900	44	14	120	22685/22686
	BF 55 LPC-3 HF+ 230V3 50/60 Hz	71400	41700	38	15	65200	38600	45	13	120	226683/22684
ON/OFF	BF 55 ON/OFF LE 400V3 50Hz	51100	29800	28	21	43700	26400	36	17	80	Pending
	BF 55 ON/OFF HF 400V3 50 Hz	65100	37900	35	17	56300	33600	44	14	100	22674
	BF 55 ON/OFF LE 400V3 60 Hz	49000	28500	27	21	42200	25300	35	17	80	Pending
	BF 55 ON/OFF HF 400V3 60 Hz	60800	35500	32	18	53700	32000	40	15	100	22675
	BF 55 ON/OFF AIR HF 400V3 60 Hz (Dairy)	57700	33900	38	16	51400	30800	45	13	100	
	BF 55 ON/OFF LE 230V3 60Hz	48700	28500	28	21	41800	25100	36	17	80	Pending
	BF 55 ON/OFF HF 230V3 60Hz	61100	35600	32	18	53800	32100	40	15	100	22676

SKOV Bluefan

BF 50 and BF 55



Optimum ventilation with reduced power consumption

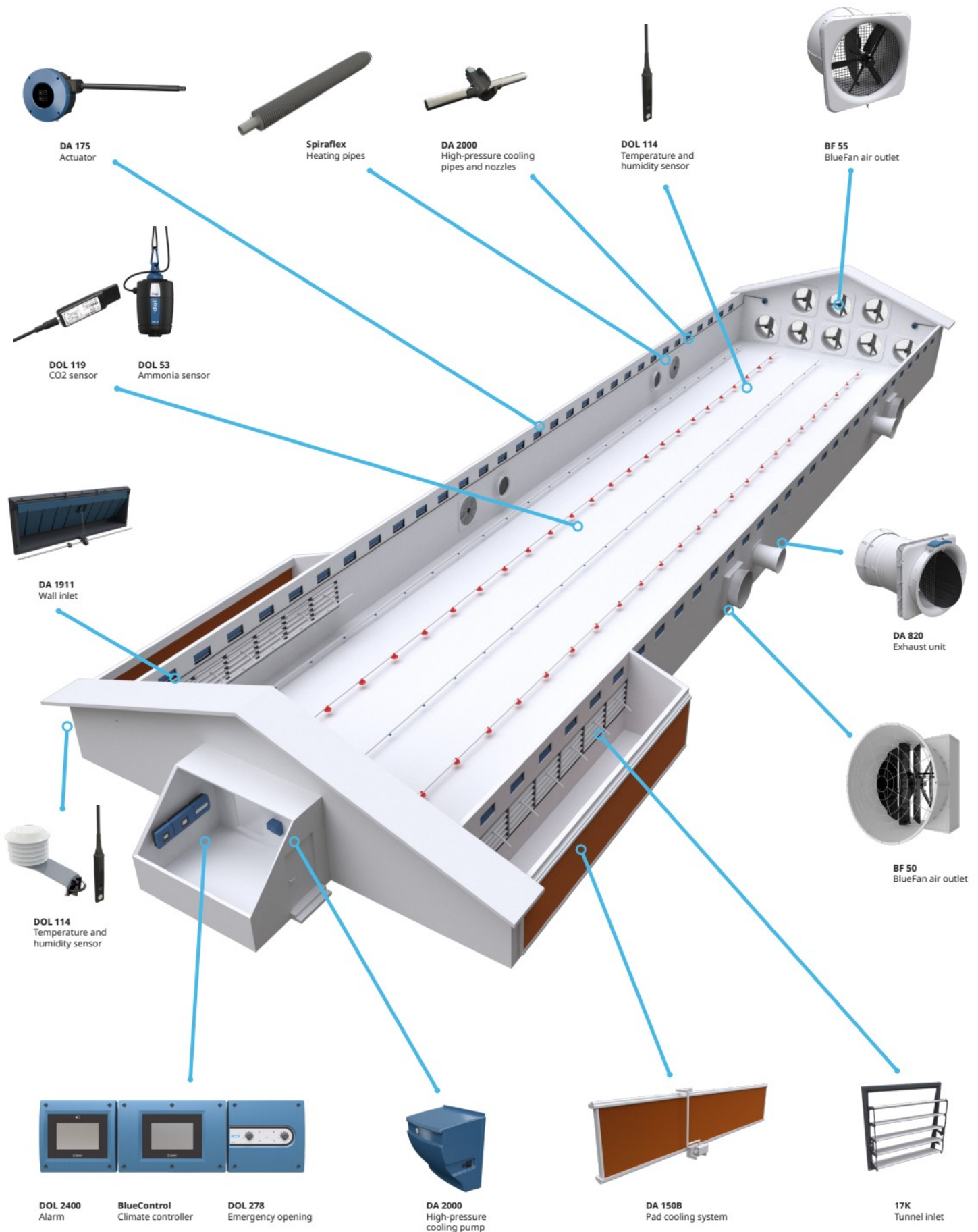
BF 50 and BF 55 Bluefan are used for Tunnel and Combi-Tunnel houses for side and tunnel mode ventilation.

You can also combine the different BlueFan variants to keep animal welfare and investment in focus.

The fan is available in stepless (0-100%) variants and traditional ON/OFF variants. The stepless variants ensure a 100% stepless system where the animals' ventilation requirements are met in the most optimum way – always providing the correct air velocity.

The BlueFan can be regulated according to the Dynamic MultiStep® principle. Dynamic MultiStep is unique in that the fans connect in steps until 50% of their output. When additional ventilation is required, and all the fans in the section have been switched on and reached 50%, the fans are regulated up to 100% in parallel.

BlueFan has a low energy consumption, and when combined with the Dynamic MultiStep control principle, the customer gets the most energy-efficient ventilation system on the market.



SKOV A/S

Hedelund 4 • 7870 Roslev • Denmark
T: (+45) 7217 5555

SKOV Asia Ltd.
PB Tower • 10110 Bangkok • Thailand
T: (+66) 2 382 3031-2

SKOV North America, Inc
160 Clairemont Avenue, Suite 200 • Decatur, GA 30030 • USA
T: +1 (678) 954 5743

SKOV Russia LLC
Derzhavinskaya st. 16A, office 304 • 392000 Tambov • Russia
T: +7 (4752) 49 25 39

SKOV Technical Services (Tianjin) Co., Ltd.
斯科弗技术服务(天津)有限公司
天津市武清开发区
T: 电话: (+86)-131-6178-4389

E: info@skov.com

